



JonathanWright
estate agents



12a&b Drapers Lane, Leominster, HR6 8ND. £7,000 Per Annum

**12a&b Drapers Lane
Leominster
HR6 8ND**

£7,000 Per Annum

PROPERTY FEATURES

- Shop Premises
- 2 Good Retail Areas
- Staff W.C
- Gas Central Heating
- Town Centre Position
- Large Display Windows
- Free 1 hour parking close by



To view call 01568 616666



JonathanWright
estate agents



TO LET £7,000 PER ANNUM

Situated in a busy pedestrian thoroughfare in the historic market town of Leominster, a well presented and spacious double fronted retail premises, having 2 large display windows to front, 2 good retail areas, kitchenette, W.C. and gas central heating.

Drapers Lane is a good and vibrant retail position linking Leominster's Corn Square with Broad Street and close by is free 1 hour parking. Leominster's town centre has a good range of shops, supermarkets, cafes and restaurants also has a weekly open air market and a monthly farmers market in the nearby Corn Square.

cupboards, space for appliances and lighting.

A second door off the secondary retail area opens into a W.C. having a low flush W.C, pedestal wash hand basin and an extractor fan.

SERVICES.

The property has mains water, mains drainage, gas fired central heating and telephone subject to BT regulations.

Tenancy

£7,000 per annum

Utilities to be paid by the tenant

Terms negotiable.



An entrance door off Drapers Lane opens into a good size retail area having a good display window to front, vinyl floor covering, radiators, power points, telephone point, inset lighting and a door into a storage cupboard . An archway leads into a secondary retail area that has a full length window to front looking into Drapers Lane, a secondary entrance door, inset lighting throughout, a continuation of the vinyl floor covering, plenty of power points, radiators and also plumbing and drainage.

To the rear of the secondary retail area a door opens into a kitchenette having a stainless steel sink unit with cupboards under, working surfaces with

ROOMS AND SIZES

Retail Area

7.16m x 2.59m widening to 3.76m (23'6" x 8'6" widening to 12'4")

Secondary Retail Area 6.50m x 3.86m (21'4" x 12'8")

Kitchenette 2.16m x 1.85m (7'1" x 6'1")

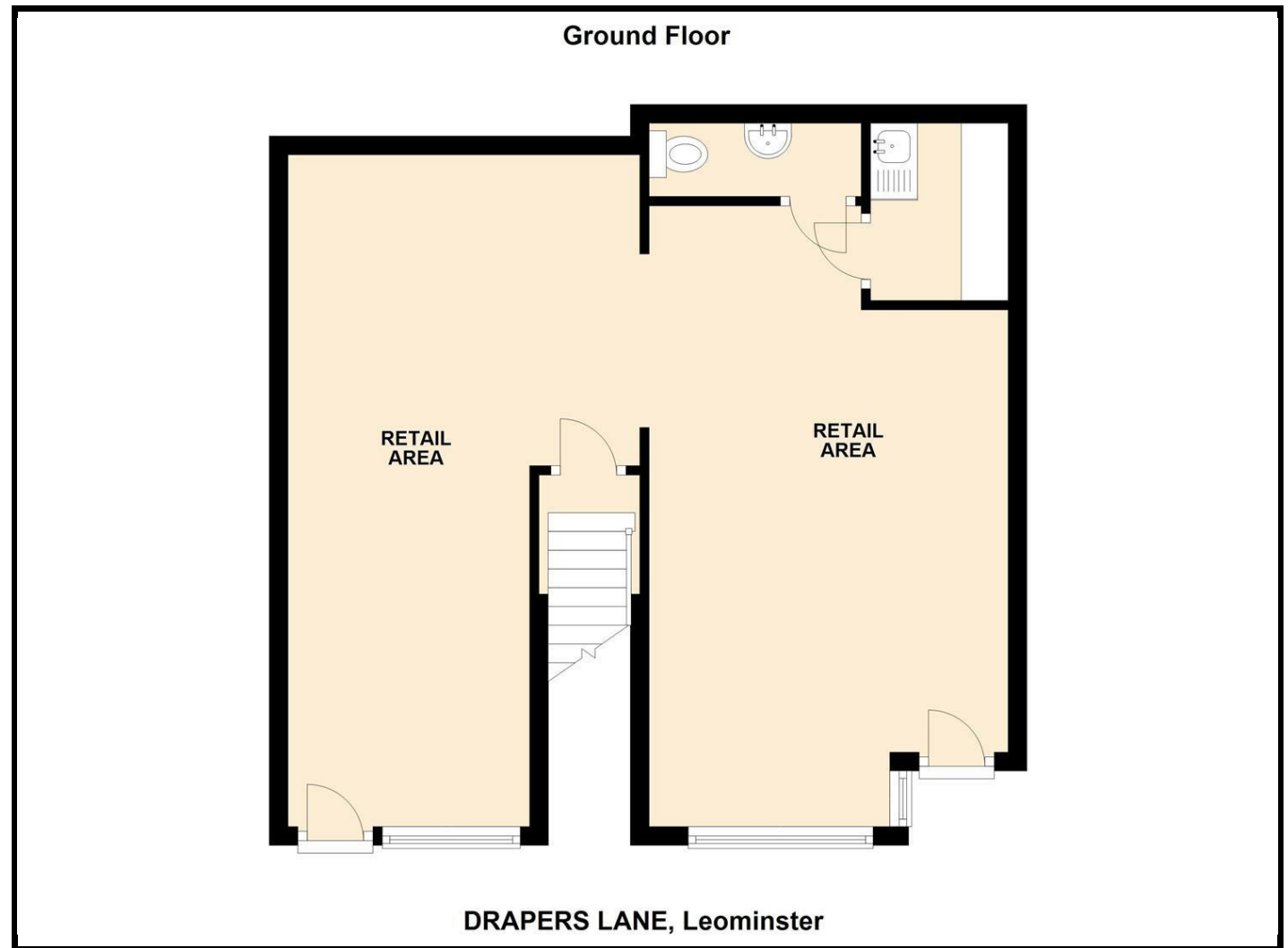
Staff W.C.

PROPERTY INFORMATION

Council Tax Band -

Property Tenure -

Energy Efficiency Rating		Current	Potential
Very energy efficient - lower running costs			
(92 plus) A			
(81-91) B			
(69-80) C			
(55-68) D			
(39-54) E			
(21-38) F			
(1-20) G			
Not energy efficient - higher running costs			
England & Wales		EU Directive 2002/91/EC	



Appliances

Please note that the agents have not tested the appliances to the property and cannot verify they are in working order.

Jonathan Wright Estate Agents for themselves and the seller of this property, whose agents they are, give notice that these particulars do not constitute any part of an offer or contract, that all statements contained in these particulars relating to this property are made without responsibility and are not to be relied upon as a statement or representation of fact and that they do not make or give any representation or warranty whatsoever in relation to this property.

Any intending buyers must satisfy themselves by inspecting or otherwise as to the correctness of each of the statements contained in these particulars. These particulars are issued solely on the understanding that all negotiations are conducted throughout this agency.